



TECHNICAL SPECIFICATIONS

Teatro grande

STAGE

- Stage width: (wall to wall) 10,2 m
- Stage depth: - normal stage 6,0 m
- proscenium 1m 7,0 m

- Stage height: (see stage plan) 1,0 m
- Height above stage level: Due to the form of the roof there are different height levels from 3,2m along the side walls to more than 6m in the center.
Free space below spotlights grid: 4,8 m (about 5 m width)
4,0 m (about 8 m width). The grid holds point loads to 20 kgs only

- curtains: - black back-drop, 3m high, central opening
- Border above the backdrop curtain
- 3-5 legs on both sides
(about 8 m space between hanging legs).

AUDIENCE 186 seats
tiered seating

DRESSING ROOMS 1 large dressing room for a max of 14 persons, shower and toilet
1 small dressing room for a max. of 5 persons, shower and toilet
1 soloist dressing room, shower and toilet

ACCESS AND UNLOAD: the streets in Verscio are small and narrow. Please announce your arrival, so our technicians can come to help to decide where to unload and park.
The distance to the stage is still more than 30m and there are level differences and small doors.
- Vans 3.5t: in front of casa del Clown, end of Caraa di Franci
- Trucks caraa du pròu, blocking the road

LIGHTS

- **Control board:** *etc element*
- **Dimmer** 48 channels 2000W

- **Spotlights:**

6	profile <i>Juliat</i>	1000 W	13/40°
2	profile <i>etc</i>	575 W	50°
1	profile <i>etc zoom</i>	750 W	25-50°
4	profile <i>etc junior</i>	575W	25-50°
20	PC spots <i>Juliat lutin</i>	1000 W	with barndoors
6	PC spots <i>Strand</i>	1000W	with barndoors
22	PC spots <i>Strand</i>	650 W	with barndoors

15 PAR 64, cp62 1000 W (some cp 60,61 Lamps)
4 asym. Fluter *Strand* 500 W mit Torblenden
4 asym. Fluter Selecon 1000W

- **Follow spot:** 1 *Niethammer* 1000 W

- **LED spotlights** 5 etc Source Four LED series 2, Profile 25-50°,
mounted as frontlight

9 etc ColorSource PAR, mounted as backlight

- DMX Patch Plan - Dimmer Ch. 1 - 48
- etc Colour source PAR Ch. 51-55, 56-60, 61-65, 66-70, 71-75, 76-80,
81-85, 86-90, 91-95
- etc LED lustr 2 Setup Advanced: HSIC -- Str Ch. 101-107, 108-114,
115-121, 122-128, 129-135

- Colour Gels Standard colours, warm - cold, lavanders, soft-edge, diffusors

- **Stands** 6 boom type stands, 2m high
8 floor stands

SOUND

1 Digital mixer, , *Allen&Heath QU 16*
1 CD Player with Auto-Pause (Single Mode)
1 Multicore cable 16/4 20m

2 PA speakers *KV2 EX10*
2 Monitor speakers *HK Audio DART*
2 Subwoofer *HK Audio*

2 dynam. Micr. *AKG*
2 dynam. Micr *Sure SM 57*
2 dynam. Micr *Sure SM 58*
1 Wireless Micr *Sure*
2 floor micr. *AKG*

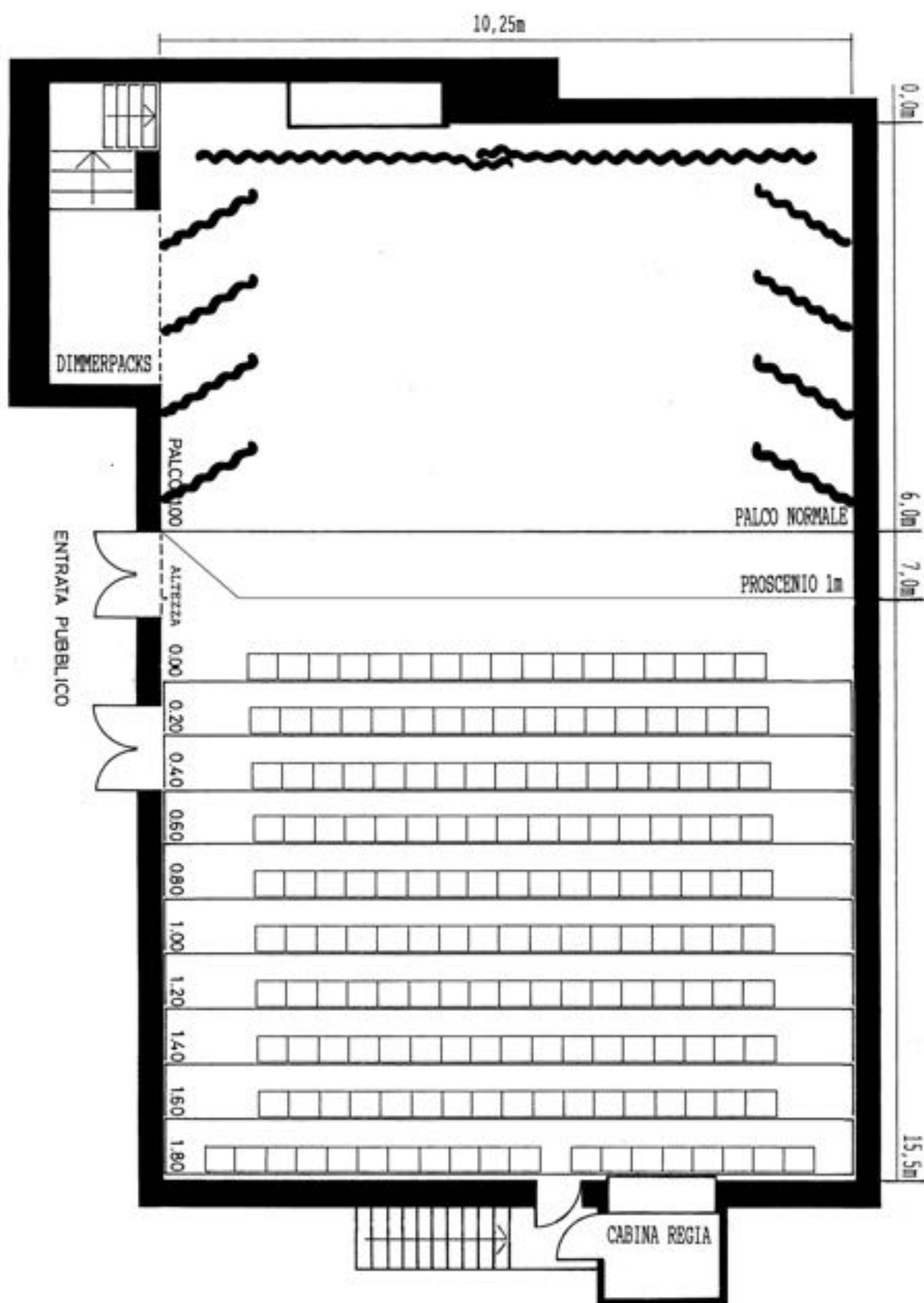
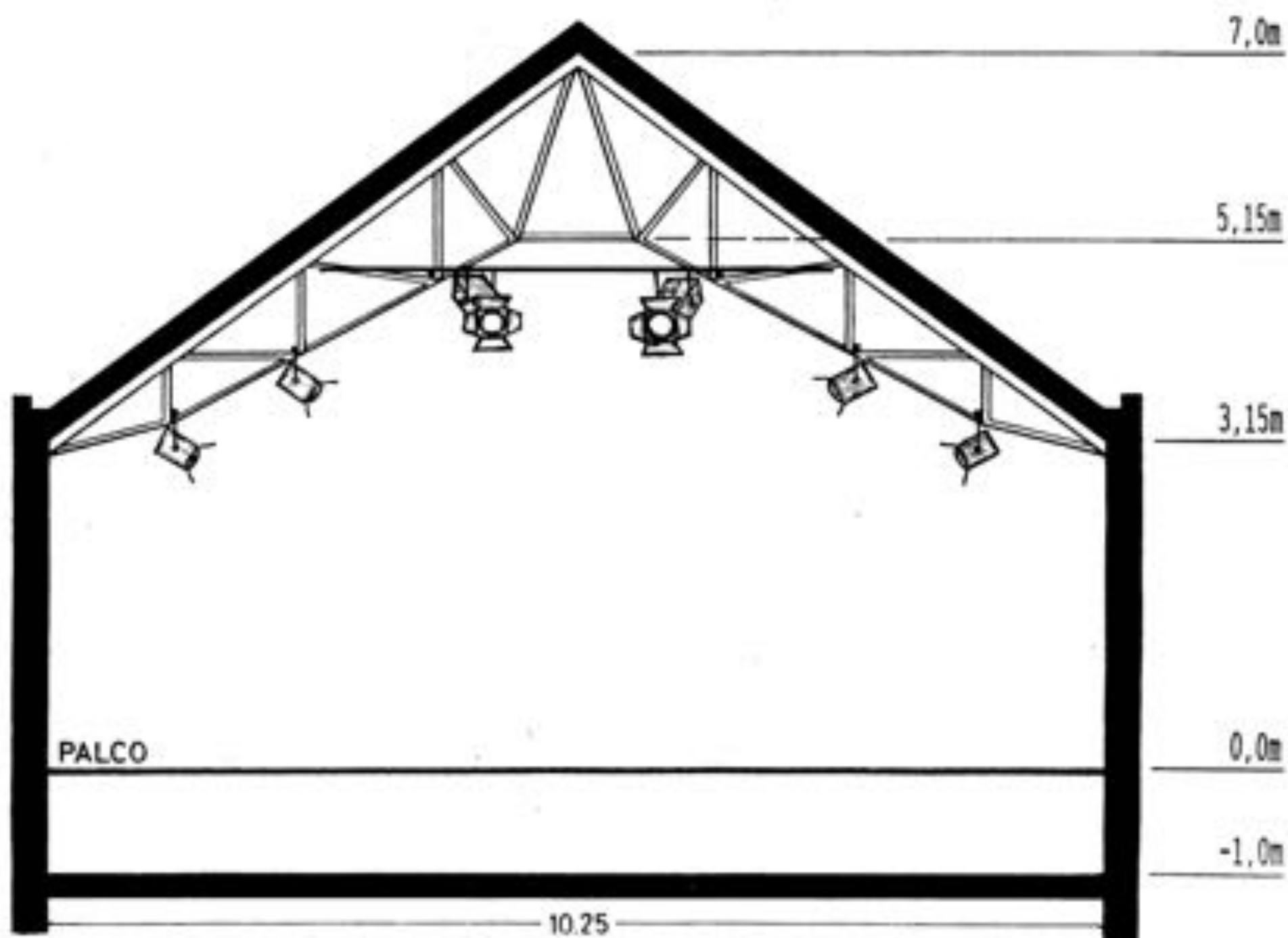
2 Headset or Lavallier micr. *Rode/ AKG*

VIDEO

- Beamer *Benq 3500 ANSI lumen*
- Shutter Video DMX
- white projection screen 7,6 x 3,8m
- black projections screen 7,6 x 3,8m

MUSICAL INSTRUMENTS

1 Upright Piano, black
1 Grand piano *Bechstein*

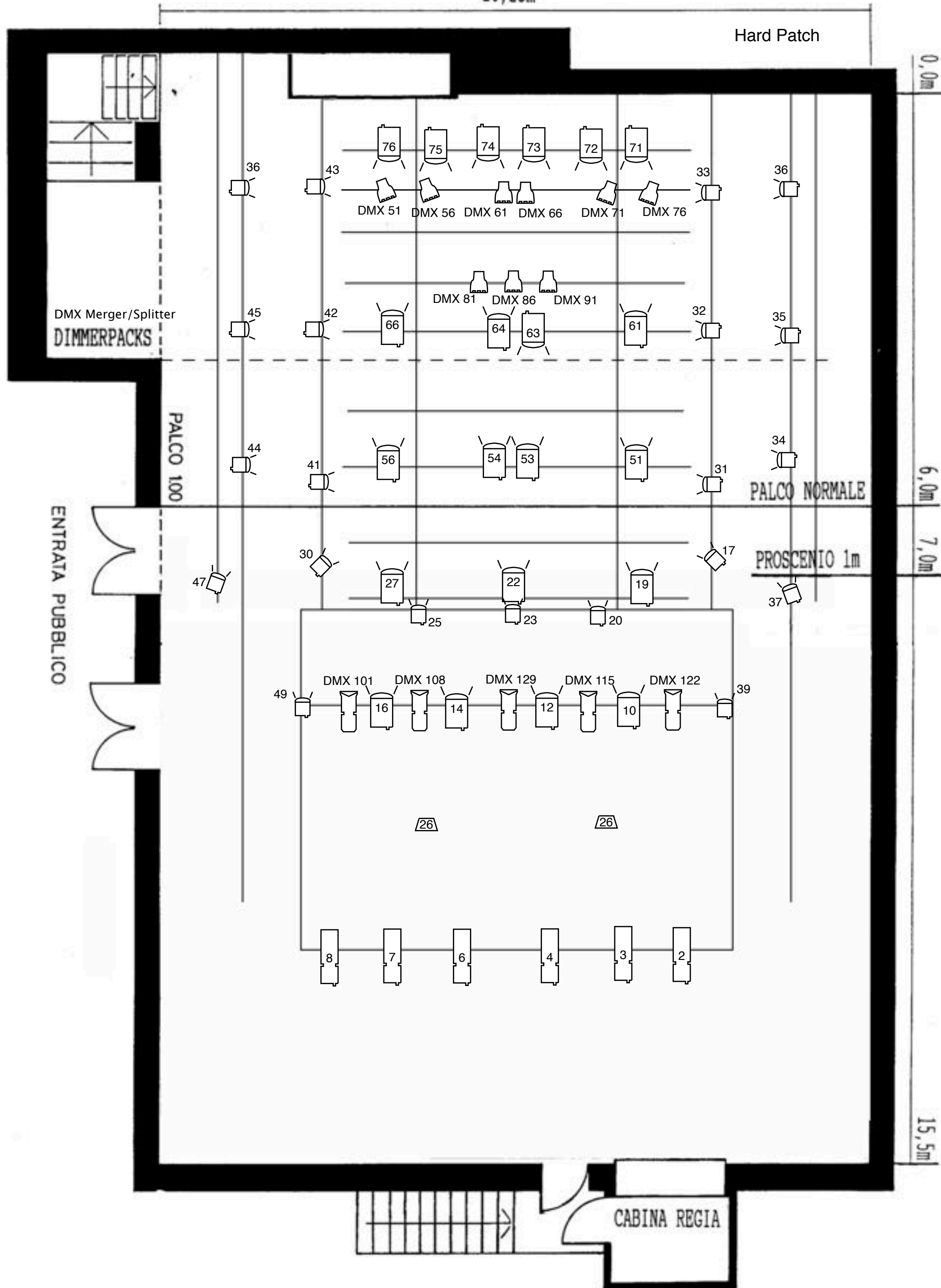


TEATRO DIMITRI CH-6653 VERSCIO

TEATRO GRANDE

10,25m

Piano luci base



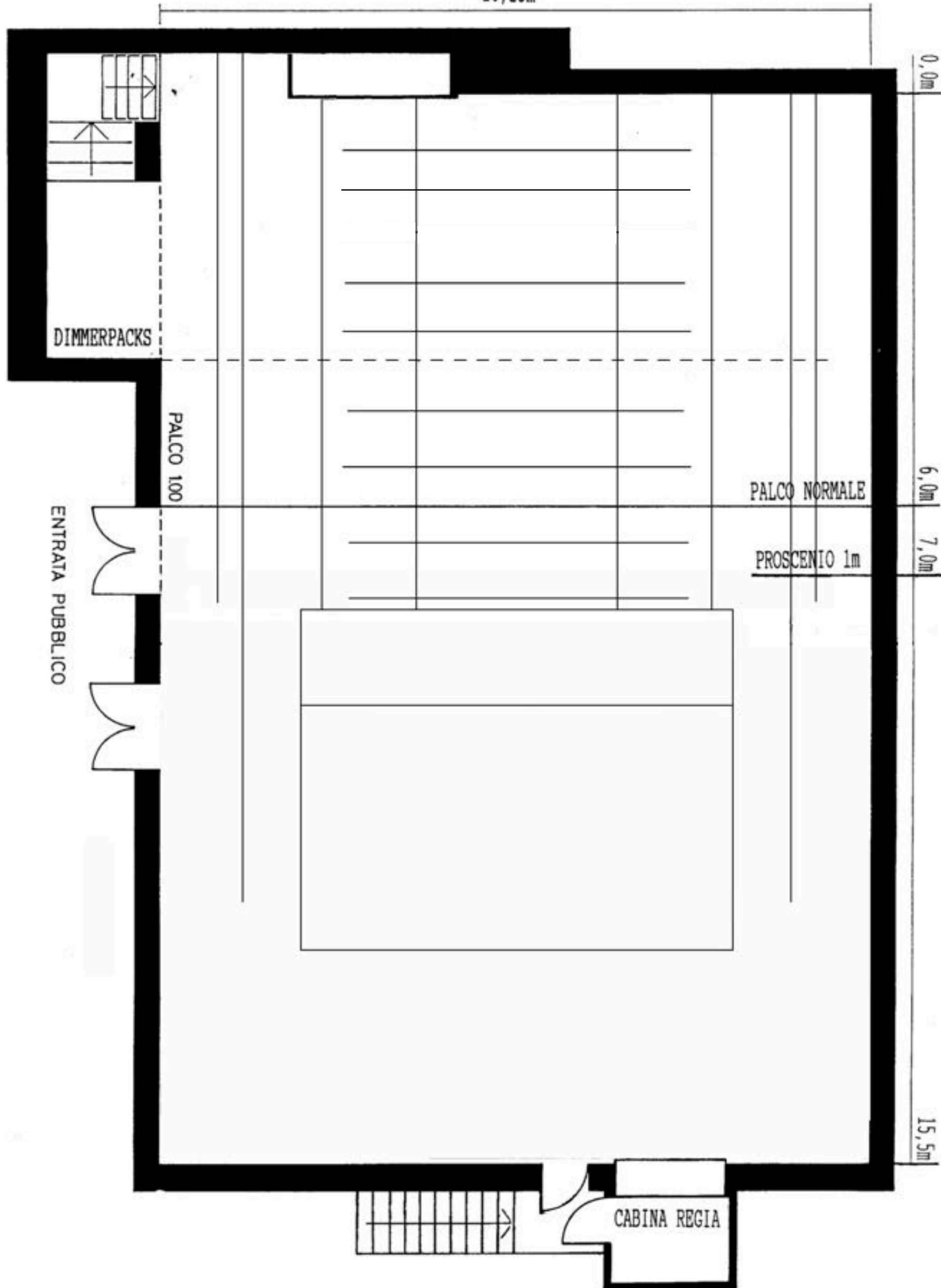
	PC 1000W		etc ColorSource PAR
	PC 650W		Flood 500W
	Juliat Profile 1000W 15-30°		etc Source Four LED lustr 2 series HSIC Str
	PAR 64 cp62		

Dimmer: 48 chann. 2000W
Control: etc element 256 chann.

TEATRO DIMITRI CH-6653 VERSCIO

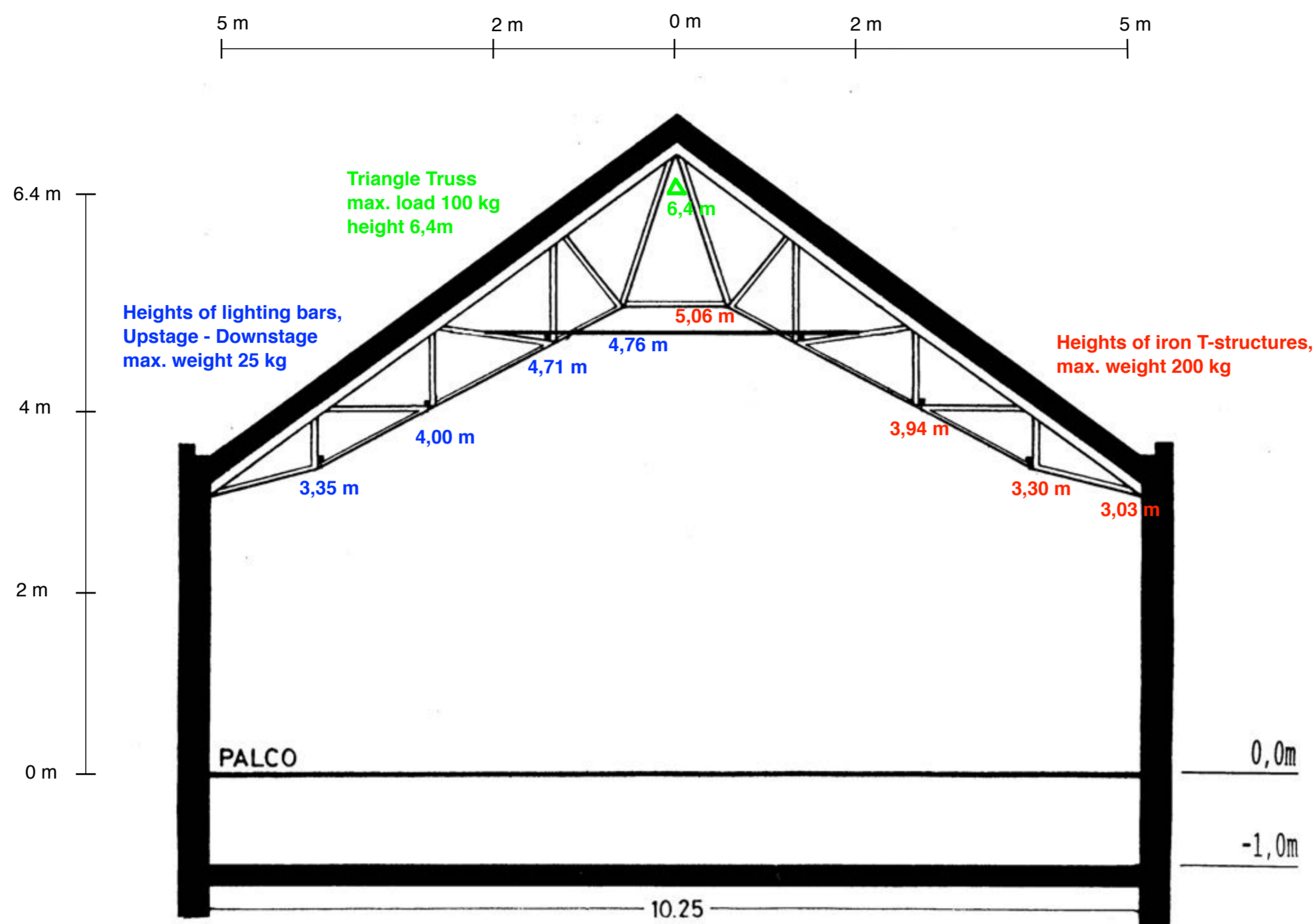
TEATRO GRANDE

10,25m



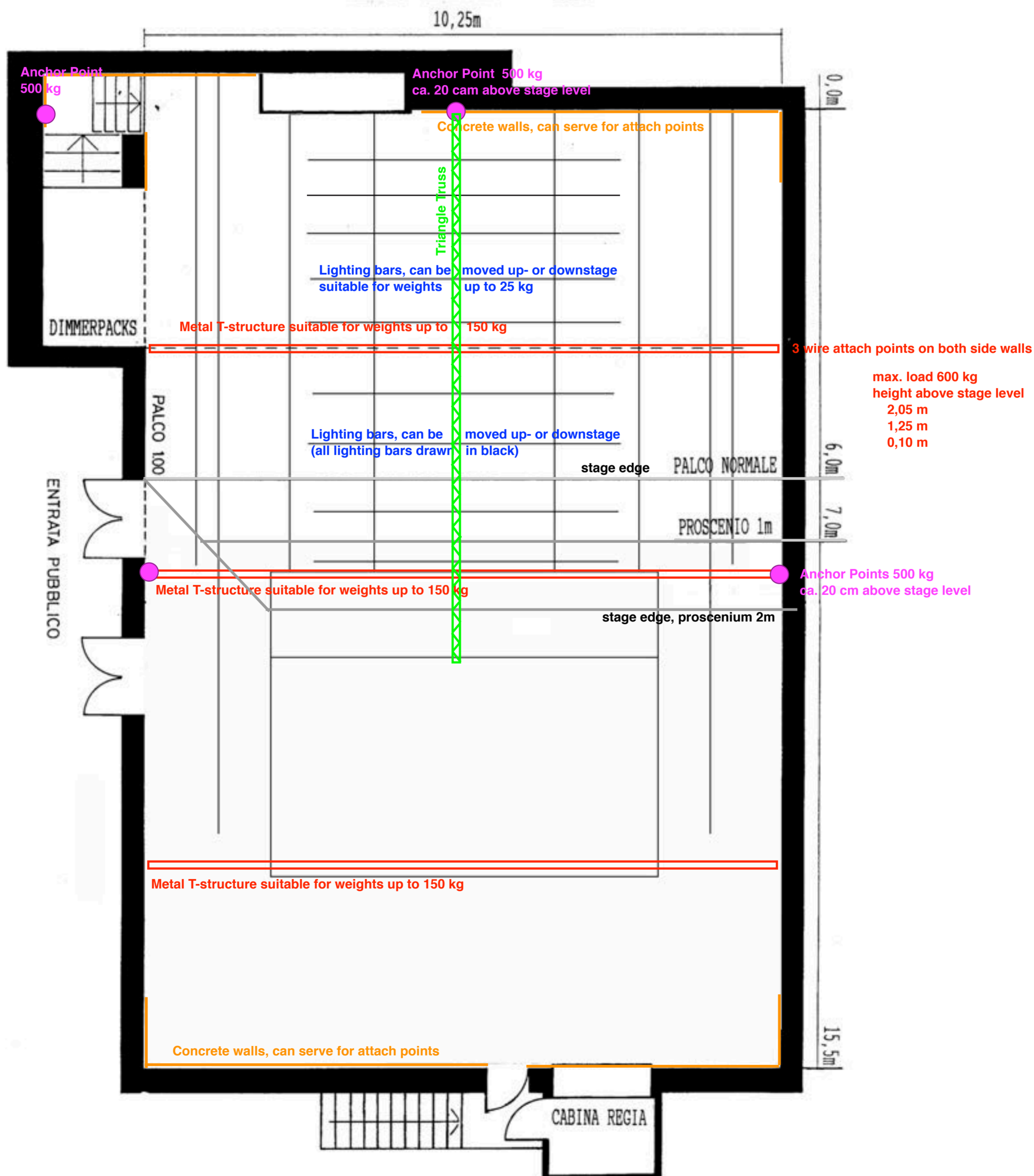
Teatro Dimitri Teatro grande

Heights and Rigging



TEATRO DIMITRI CH-6653 VERSCIO

TEATRO GRANDE



CONTACT

Teatro Dimitri
Caraà du Teatro Dimitri 10
6653 Verscio

Tel +41 58 666 67 80
info@teatrodimitri.ch

Technicians:

Helena Mösch	Mob. +41 78 613 27 14	tecnica@teatrodimitri.ch
Urs Mösch	Mob. +41 78 610 48 82	
Elia Albertella	Mob. +41 77 903 65 01	
Christoph Siegenthaler	Mob. +41 79 313 76 59	chr.tecnico@teatrodimitri.ch

